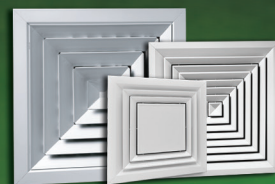
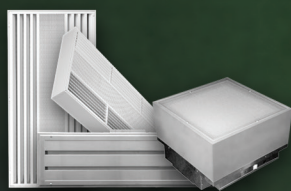
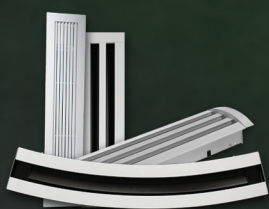


TUTTLE & BAILEY® PRODUCT HANDBOOK

Our Complete Product Offering



T
&
B

CEILING DIFFUSERS

GRILLES & REGISTERS

LINEAR/SLOT DIFFUSERS

CRITICAL ENVIRONMENT

SECURITY GRILLES

PLENUM SLOTS

TERMINAL UNITS



AIR-TRAC™
NO LIMITS...

Aluminum Extrusions

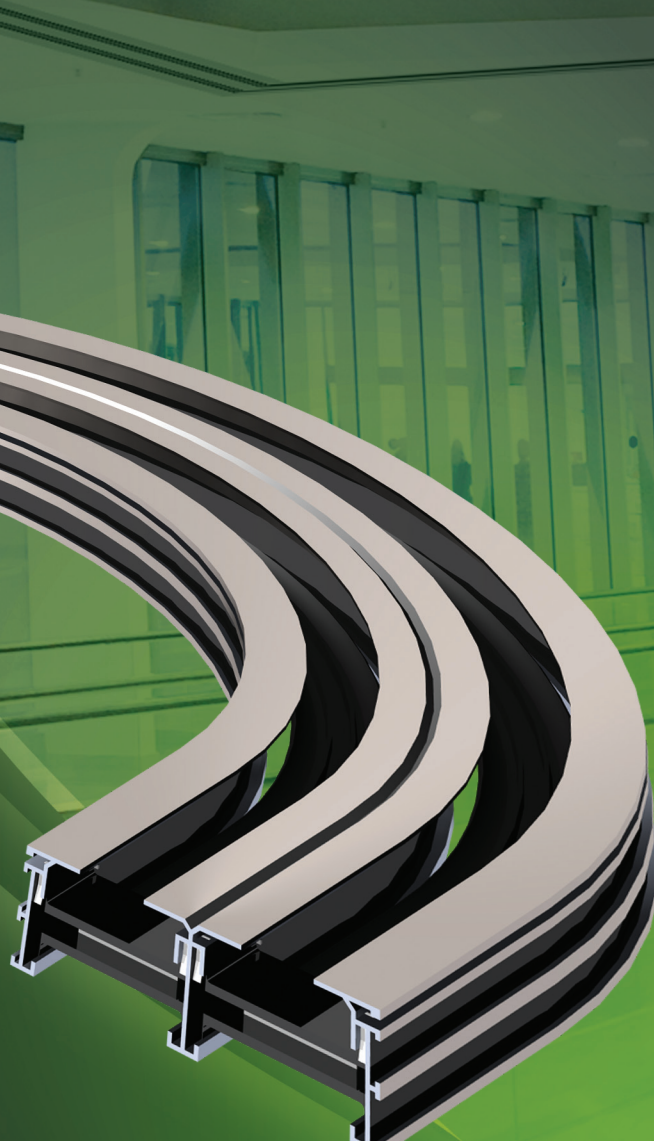
Up to 3" Slot Widths

Custom Curving

Designed to deliver maximum performance without sacrificing an architect's aesthetic vision. The AIR-TRAC™ (architectural linear diffuser system) from Tuttle & Bailey® is the ultimate compliment for high end construction projects.

The aluminum constructed AIR-TRAC™ delivers higher airflows and lower noise than standard linear diffusers. AIR-TRAC™ also offers up to 3" slot widths with multiple slots.

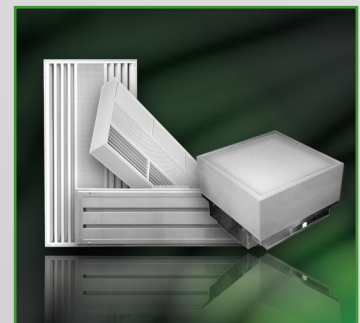
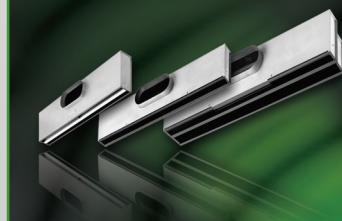
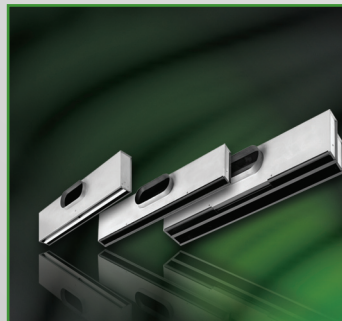
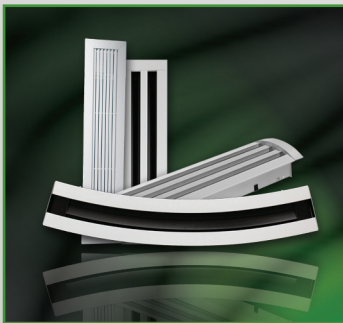
Unlike traditional linear diffusers, which are often installed after the ceiling is completed, AIR-TRAC™ is installed along with the ceiling suspension system allowing AIR-TRAC™ to bend and shape with the curves of the room.



 **TUTTLE & BAILEY®**
The First Name In Air Distribution

For more information on all Tuttle & Bailey® Products contact your local Tuttle & Bailey® Representative or visit us online at www.tuttleandbailey.com





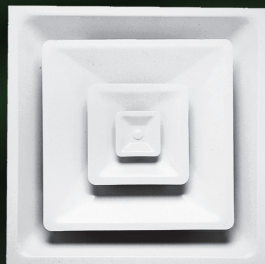
Square/Round Diffusers	2-5
Perforated Diffusers	5-6
Linear/Slot Diffusers	7-8
Grilles & Registers	8-11
Critical Environment	11-12
Security Grilles	13-14
Specialty Products	15-18
Plenum Slot Diffusers	19-21
Terminal Units	21-23
Product Index	24-25



Mixing Vane, Multi-Pattern Ceiling Diffuser

Agitair® RC® Series

- Steel or aluminum construction
- Unique mixing vane design provides high induction and rapid temperature equalization
- 1, 2, 3 or 4-way air patterns in 25 different configurations
- Removable and interchangeable cores
- Optional shock and vibration construction (SV)
- Square or round neck sizes with internal duct connection
- Standard finish:
 - White (WH)
- Accessories:
 - Damper (DOBD)



Stepdown Ceiling Diffuser, 3-Cone

1300 Series

- Steel (1300) or aluminum (A1300) construction
- Fixed or adjustable air pattern
- 4-way 360° discharge
- One piece stamped backpan with integral round neck
- Module sizes: 12x12 and 24x24
- Standard finish:
 - White (WH)
- Accessories:
 - Round Damper (RBN, RON, RRN)
 - Pattern Deflector (PD)



Stepdown Ceiling Diffuser, 2-Cone

1200 Series

- Steel (S1200) or aluminum (A1200) construction
- Fixed or adjustable air pattern
- 4-way 360° discharge
- One piece stamped backpan with integral round neck
- Module sizes: 12x12 and 24x24
- Standard finish:
 - White (WH)
- Accessories:
 - Round Damper (RBN, RON, RRN)
 - Pattern Deflector (PD)



Architectural Plaque Diffuser

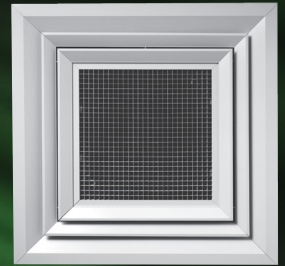
1100 Series

- Steel (T1100) or aluminum (A1100) construction
- Designed for architectural applications where aesthetics and performance is critical
- 4-way 360° discharge
- One piece stamped backpan with integral round neck
- Module sizes: 12x12 (T1100 only) and 24x24
- Standard finish:
 - White (WH)
- Accessories:
 - Round Damper (RBN, RON, RRN)
 - Blank Off Baffles (T1100BK)

Concentric Supply/Return Ceiling Diffuser

AMR500

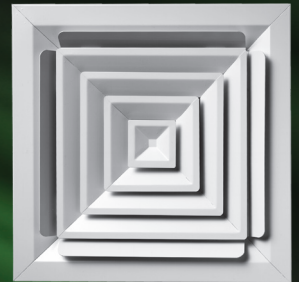
- Extruded aluminum construction
- Supply diffuser with integral return and exhaust section
- 4-way horizontal air discharge
- Grid core for return section
- Sizes: 9x9 square, 12x9 rectangular to 36x36
- Standard finish:
 - White (WH)
 - Satin Anodized (SA)
- Accessories:
 - Supply Damper (SD)
 - Return Damper (RD)



Louvered Face Ceiling Diffuser

M Series

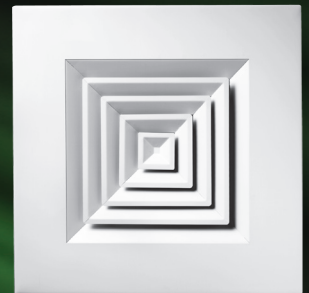
- Steel (M) or aluminum (AM) construction
- Fixed or adjustable air pattern (MA)
- Removable & interchangeable cores
- 1, 2, 3 or 4-way air pattern
- Square to round (MSR)
- Module sizes: 12x12, 24x24 & 48x24
- Standard finish:
 - White (WH)
- Accessories:
 - Round Damper (RBN, RON, RRN)
 - Square damper (SMOBD) steel (AMOBD) Aluminum



Fire Rated Louvered Face Ceiling Diffuser

M-FR, MA-FR

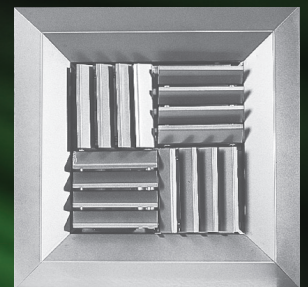
- M-FR: Fire Rated Fixed Pattern Diffuser, Square Neck
- MA-FR: Fire Rated Adjustable Pattern Diffuser, Square Neck
- Removable snap-in center cores provide easy access
- 24x24 or 12x12 modules
- 1, 2, 3 or 4-way air pattern
- Comes with fusible link three hour fire damper
- Lay-in margin (LT)
- Standard finish:
 - White (WH)



Modular Core Ceiling Diffuser

SQD, AQD

- Steel (SQD) or aluminum (AQD) construction
- Cores can be rotated in various directions to provide 6 different air patterns
- Removable cores provide easy duct access
- Sizes: 6x6 to 24x24
- Standard finish:
 - White (WH)
- Accessories:
 - Damper (SMOBD) steel (AMOBD) Aluminum
 - Square to Round Transition (SRD)
 - Screw driver operation





Architectural Swirl Diffuser

T1100SW

- Steel construction
- Designed for architectural applications where aesthetics and performance is critical
- provides tight 360° radial pattern discharge
- Incorporates tall 1-7/8" neck to facilitate easy installation
- Standard finish:
 - White (WH)
- Accessories:
 - Round Damper (RBN, RON, RRN)



Round Architectural Plaque Diffuser

RT1100

- Steel construction
- Designed for use in open spaces where architectural appearance is required.
- uniform 360° discharge pattern
- Spring lock mechanism allows for easy removal of plaque face
- Standard finish:
 - White (WH)
- Accessories:
 - Round Damper (RBN, RON, RRN)



Round Ceiling Diffuser, 3-Cone

P3, AP3

- Steel (P3) or aluminum (AP3) construction
- Adjustable core provides 2 discharge patterns
- Removable center core assembly for easy duct access
- Sizes: 6" to 36" (steel), 6" to 18" (aluminum)
- Safety cable standard on sizes over 10"
- Standard finish:
 - White (WH)
- Accessories:
 - Round Damper (RBN, RON, RRN)



Round Ceiling Diffuser, 4-Cone

VJ, AVJ Series

- Steel (VJ) or aluminum (AVJ) construction
- Adjustable core provides 3 discharge patterns
- Removable center core assembly for easy duct access
- Optional anti-smudge cone
- Sizes: 6" to 36" (steel), 6" to 18" (aluminum)
- Safety cable standard on sizes over 10"
- Standard finish:
 - White (WH)
- Accessories:
 - Round Damper (RBN, RON, RRN)

Industrial Round Diffuser

VB

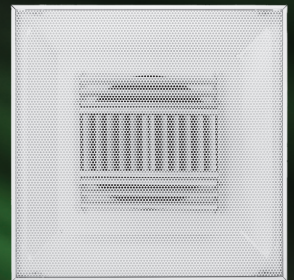
- Heavy duty steel construction
- Adjustable inner core provides full horizontal or vertical discharge pattern
- Removable center core assembly for easy duct access
- Sizes: 10" to 36"
- Standard finish:
 - White (WH)
- Accessories:
 - Round Damper (RBN, RON, RRN)



Adjustable Curved Blade Diffuser

PV, APV

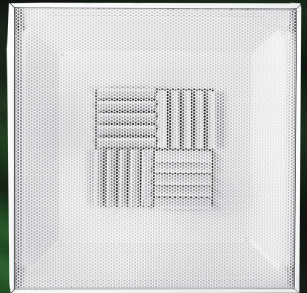
- Steel backpan with steel (PV) or aluminum (APV) face
- 1, 2, 3 or 4-way air discharge pattern (factory set)
- Individually adjustable blades
- Removable perforated face (51% area)
- One piece stamped backpan with integral neck
- Square and round neck sizes
- Module sizes: 12x12, 16x16, 20x20, 24x12, 24x24, 48x24
- Standard finish:
 - White (WH)
- Accessories:
 - Square Dampers (SMOBD, AMOBD) - Round Dampers (RBN, RON, RRN)



Modular Core Diffuser

PM, APM

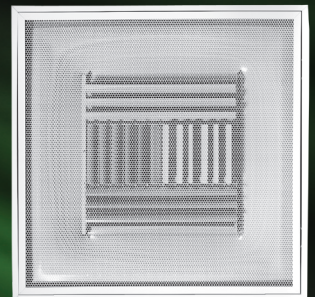
- Steel (PM) or aluminum (APM) construction
- Cores can be rotated in various directions to provide 6 different air patterns
- Removable perforated face (51% free area)
- Square neck sizes: 6x6 to 20x20
- Standard finish:
 - White (WH)
- Accessories:
 - Damper SMOBD, AMOBD w/ screw driver operated damper

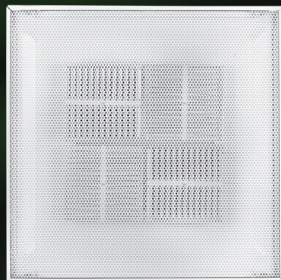


Adjustable Curved Blade Diffuser

PCB

- Aluminum construction
- 1, 2, 3 or 4-way air discharge pattern (factory set)
- Individually adjustable blades
- Removable perforated face (63% free area)
- Optional MRI construction
- Square neck sizes
- Module sizes: 12x12, 16x16, 20x20, 24x12, 24x24, 48x24
- Standard finish:
 - White (WH)
- Accessories:
 - Damper (A7)

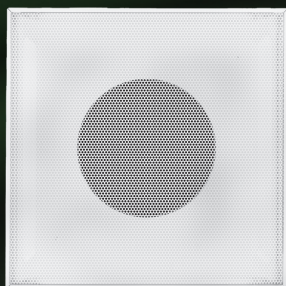




Face Mounted Pattern Deflectors

PP, APP

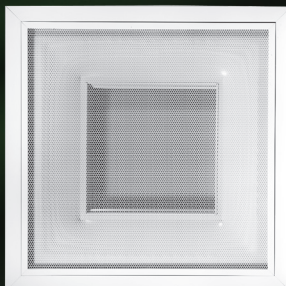
- Steel backpan with steel (PP) or aluminum (APP) face
- Adjustable face mounted pattern deflectors provide
- 1, 2, 3 or 4-way discharge air pattern
- Removable perforated face (51% free area)
- Square and round neck sizes
- Module sizes: 12x12, 16x16, 20x20, 24x12, 24x24, 48x24
- Standard finish:
 - White (WH)
- Accessories:
 - Square Dampers (SMOBD, AMOBD)
 - Round Dampers (RBN, RON, RRN)



Return Diffuser

PR, APR

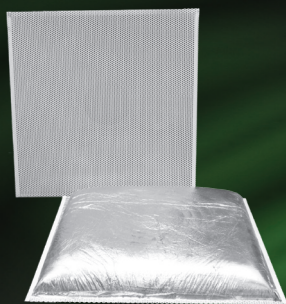
- Steel backpan with steel (PR) or aluminum (APR) face
- Matching return for PV & PP supply diffusers
- One piece stamped backpan with integral neck
- Removable perforated face (51% free area)
- Square and round neck sizes
- Standard finish:
 - White (WH)
- Accessories:
 - Square Dampers (SMOBD, AMOBD)
 - Round Dampers (RBN, RON, RRN)



Return Diffuser

PCR

- Aluminum construction
- Matching return for PCB supply diffuser
- Removable perforated face (63% free area)
- Optional MRI construction
- Square neck sizes
- Module sizes: 12x12, 16x16, 20x20, 24x12, 24x24, 48x24
- Standard finish:
 - White (WH)
- Accessories:
 - Damper (A7)



Return Panels

PTL, APTL

- Steel (PTL) or aluminum (APTL) construction
- Panel can used for return and exhaust applications
- Perforated pattern provides 51% free area
- Module sizes: 12x12, 16x16, 20x20, 24x12, 24x24, 48x24
- Standard finish:
 - White (WH)
- Accessories:
 - Molded Backpan
 - Pattern deflectors 1, 2, 3 or 4-way air discharge pattern

Architectural Linear Diffuser

AIR-TRAC®

- Extruded aluminum construction (Max one piece length 144")
- Five slot widths (1", 1 1/2", 2", 2 1/2" and 3")
- One or two slot units available
- Choice of Uniflex or Control Line Pattern Controllers, Returns
- Standard finish:
 - White (WH) *
- Accessories:

- Distribution plenums	- Light shield
- Miter cornered section	- Blank off, curving

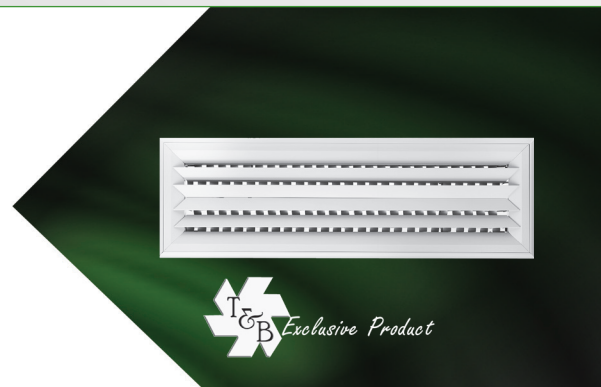
**White is standard finish for all Margins except "S" & "N"
Flat black is standard Finish for Marging "S" & "N"*



Agitair® Stripline® Diffusers

EH Series

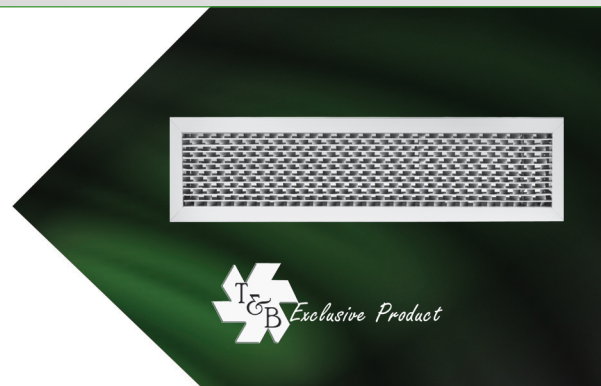
- Extruded aluminum construction
- Unique mixing vane design for high induction rate
- Removable core for easy duct access
- Five mounting frames accommodate many installations
- Three air patterns available (10, 20, 21)
- Maximum one piece length 72"
- Continuous lengths available with alignment tabs
- Mitered corner sections available
- Standard finish:
 - Satin Anodized (SA)
 - White (WH)



Agitair® Stripline® Diffusers

EF Series

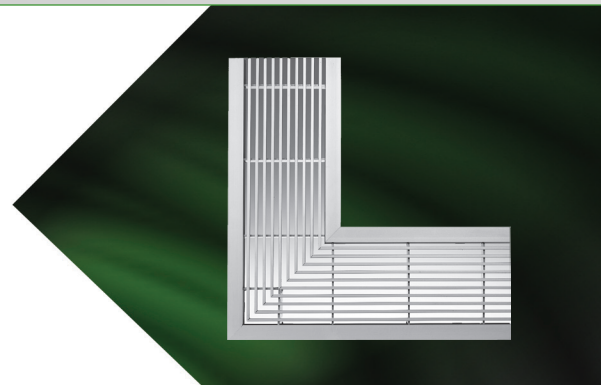
- Extruded aluminum construction
- Unique mixing vane design for high induction rate
- Removable core for easy duct access
- Five mounting frames accommodate many installations
- Maximum one piece length 72"
- Continuous lengths available with alignment tabs
- Mitered corner sections available
- Standard finish:
 - Satin Anodized (SA)
 - White (WH)

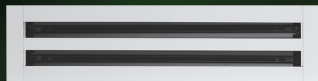


Imperialline® Linear Grilles

4000 Series

- High-quality aluminum extrusions
- Components mechanically interlocked for a smooth appearance
- Flush and overlapping margins for use with plaster frames
- Concealed fasteners with positive holding spring latches
- 0°, 15° & 30° deflection
- Floor applications margin 700, 800, 900 & 9SH
- 8 available core styles
- Maximum one piece 72"
- Miter corner, access door, dampers & curving
- Standard finish:
 - White (WH)





Linear/Slot Diffusers

6000 Series

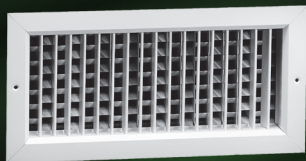
- Extruded aluminum construction
- One to eight slots available with three available slot widths (1/2", 3/4", 1")
- Supply units are field adjustable for horizontal or vertical discharge
- Return units ship without pattern controllers
- Maximum one piece 72"
- Continues length available w/ alignment tab
- Miter corners, curving
- 180° adjustable pattern
- Standard finish:
 - White (WH)



Linear Floor Diffuser

200 Series

- Extruded aluminum construction
- Heavy duty frame and blades for floor applications
- Unique dual multi-shutter damper
- Heating and cooling applications
- Standard finish:
 - Satin Anodized (SA)



Agitair® Grilles & Registers

DQM (Supply), DQR (Return)

- Aluminum construction (extruded margins and face blades)
- Adjustable face blades on 3/4" centers (DQM)
- Stationary face bars 40° deflection (DQR)
- Rear diffusion vanes provide high entrainment and rapid temperature equalization
- Unique mixing vane design for high induction rate
- Sizes: 6x4 to 36x24
- Standard finish:
 - White (WH)
 - Satin Anodized (SA)
- Accessories:
 - Damper (A7) - Mounting Frame (A45)



Aerovane Supply Grilles, Aluminum

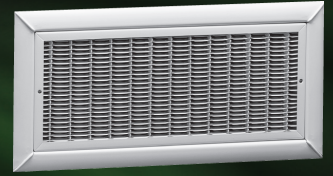
AV50, AV54, AV60, AV64

- Aluminum construction
- Single deflection (AV50, AV60)
- Double deflection (AV54, AV64)
- Adjustable airfoil blades spaced on 3/4" centers
- Sizes: 6x4 to 48x48
- Standard finish:
 - White (WH)
 - Satin Anodized (SA)
- Accessories:
 - Damper (A7)
 - Mounting Frame (A45)

Uni-Flo® G-Series Grilles & Registers

GOA, GAA, GMA, GOR, GAR, GMR, GOV, GAV

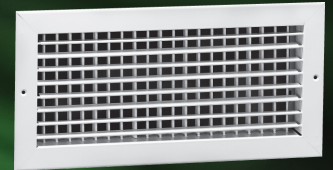
- Steel construction
- 3 core types: A (supply), R (return), V (transfer)
- Unique core designs provide high capacity and low pressure loss
- Removable core (GMA, GMR models)
- V-Core is sight tight
- Standard finish:
 - White (WH)
- Accessories:
 - Damper (SOBD)



Triflex Supply Grilles & Registers

T50, T60, A50, A60 Series

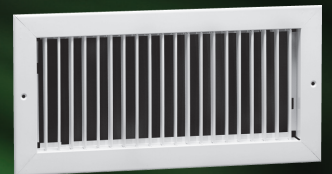
- Steel (T50, T60) or aluminum (A50, A60) construction
- Single deflection (T50, T60, A50, A60)
- Double deflection (T54, T64, A54, A64)
- Adjustable blades spaced on 3/4" centers
- Sizes: 6x4 to 48x48
- Standard finish:
 - White (WH)
- Accessories:
 - Damper (SOBD, AOBD)
 - Mounting frame (45, A45)



Triflex Return Grilles & Registers

T70, T80, A70, A80 Series

- Steel (T70, T80) or aluminum (A70, A80) construction
- Stationary bars on 3/4" centers (T70, T80, A70, A80)
- Stationary bars on 1/2" centers (T75, T85, A75, A85)
- 0° or 35° deflection (steel), 0° or 35° deflection (aluminum)
- Sizes: 6x4 to 48x48
- Standard finish:
 - White (WH) -
- Accessories:
 - Damper (SOBD, AOBD)
 - Mounting Frame (45, A45)



Curved Blade Grilles & Registers

A20, A40 Series

- Aluminum construction
- 1, 2, 3 and 4-way patterns
- Individually adjustable curved vanes on 1" centers
- Sizes: 6x6 to 36x36
- Standard finish:
 - White (WH)
- Accessories:
 - Damper (AOBD, SOBD, MSDM)
 - Mounting Frame (A45)

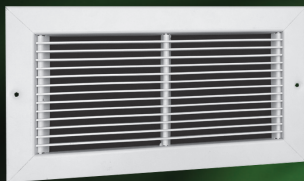




Triflex Supply Heavy Duty Grilles & Registers

T125, T155

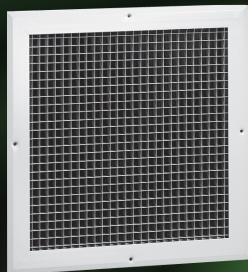
- Heavy duty steel construction
- Single deflection (T125)
- Double deflection (T155)
- Support bars for added reinforcement
- Sizes 6x4 to 48x48
- Standard finish:
 - White (WH)
- Accessories:
 - Damper (SOBD)
 - Mounting Frame (45)



Triflex Return Heavy Duty Grilles & Registers

T115, A110

- Heavy duty steel construction (T115)
- Heavy duty aluminum construction (A110)
- 0° or 38° deflection (T115), 0° or 42° deflection (A110)
- Support bars for added reinforcement
- Sizes: 6x4 to 48x48
- Standard finish:
 - White (WH) - T115
 - Satin Anodized (SA) -A110
- Accessories:
 - Damper (SOBD, A7)
 - Mounting Frame (45, A45)



Grid Core Return Grilles & Registers

CRE, CR and SCRE Series

- Extruded aluminum construction (CRE, CR series)
- Steel margin with aluminum grid core (SCRE series)
- Return or transfer grille
- 3 grid core styles: 1/2x1/2x1/2, 1/2x1/2x1, 1x1x1
- Sizes: 6x4 to 48x48
- Standard finish:
 - White (WH)
- Accessories:
 - Damper (AOBD)
 - Mounting Frame (A45)



Transfer Grilles

A980, A990 Series

- Extruded aluminum construction
- A980: "Y" shaped louvers spaced on 1" centers
- A990: "V" shaped louvers spaced on 1/2" centers (louvers overlap for sight tight appearance)
- Sizes: 6x6 to 36x36
- Standard finish:
 - White (WH)
 - Satin Anodized (SA)

Perforated Return Grilles

PG, APG Series

- Steel (PG) or aluminum (APG) construction
- Perforated face: 3/16" holes on 1/4" staggered centers, 51% free area
- Matches appearance of perforated supply diffusers
- Sizes: 6x4 to 48x48
- Standard finish:
 - White (WH)
- Accessories:
 - Damper (SOBD, AOBD)
 - Mounting Frame (45, A45)



Return Filter Grilles

T70FB, T80FB, T115FB, A70DFB, A80DFB, CRE500FB,

PGFB, APGFB Series

- Steel or aluminum construction
- Knurled knob or 1/4 turn fastening methods
- 1" or 2" filter frame (filters provided by others)
- 1/4 turn or wing nut (T115FB only)
- 1" filter frame (T115FB only)
- Standard finish:
 - White (WH)



Versaflex Supply Grilles & Registers

VF Series

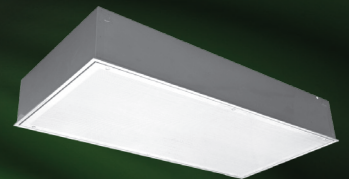
- Extruded aluminum construction
- Single deflection (VF)
- Double deflection (VF5)
- Supply or return applications
- Removable reversible core provides 5° or 15° deflection patterns
- Sizes: 6x4 to 36x36
- Standard finish:
 - White (WH)
 - Satin Anodized (SA)
- Accessories:
 - Damper (A7)



Laminar Flow Diffuser

TENSOR®

- Steel, aluminum or stainless steel construction
- Flush face diffuser with non-aspirating laminar air pattern
- Removable perforated face with quarter turn fasteners and safety cable
- HEPA filter option includes knife edge and retaining clips
- Sizes: 24x24, 24x36, 48x12, 48x24, 60x24
- Standard finish:
 - White (WH)
 - Mill (ML)
- Accessories:
 - Round Damper (RBN, RON, RRN)
 - Surface mount frame (SMF, TRM147)

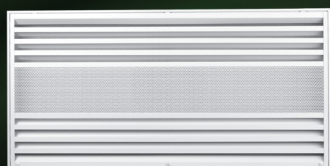




Linear Slot Diffuser - Critical Environment

V-SLOT

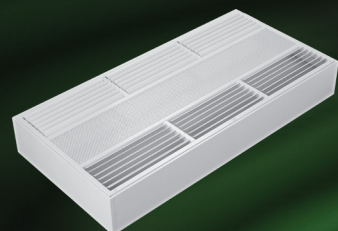
- #304 stainless steel construction
- Non-adjustable vertical air curtain
- 2 slot configuration, 1" slot width
- Includes stainless steel plenum with rounded edges
- Removable face with quarter turn fasteners and safety cable
- Sizes: Maximum one piece length 84"
- Standard finish:
 - Satin Polish (SP)
- Accessories:
 - Damper (SSOBD)
 - Mitered Corner Sections



Radial Flow Diffuser, Fixed Pattern

VECTOR®

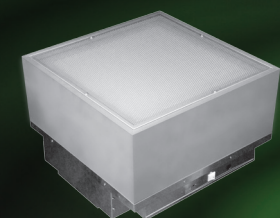
- Steel, aluminum or stainless steel construction
- Non-aspirating radial air pattern
- Ideal for laboratories, clean rooms and test facilities
- 1 or 2-way fixed air pattern configuration
- Backpan interchangeable with Radian® face
- HEPA filter option includes knife edge and retaining clips
- Sizes: 24x24, 48x12, 48x24
- Standard finish:
 - White (WH)
 - Mill (ML)
- Accessories:
 - Damper (RBN, RON, RRN)
 - Surface Mount Frame (SMF, TRM147)



Radial Flow Diffuser, Adjustable Pattern

RADIAN®

- Steel, aluminum or stainless steel construction
- Non-aspirating radial air pattern
- Ideal for laboratories, clean rooms and test facilities
- Adjustable blades provide 4 different air patterns
- Backpan interchangeable with Vector® face
- Module sizes: 24x24 to 48x24
- Standard finish:
 - White (WH)
 - Mill (ML)
- Accessories:
 - Damper (RBN, RON, RRN)
 - Surface Mount Frame (SMF, TRM147)



Laminar Terminal Diffuser

LTD

- PSC Motor w/ Solid-state speed controls
- Optional ECM, DC motor
- HEPA filter and snap-in prefilter
- Optional room side replaceable HEPA filter
- UL Listed
- Frame: Lay-in T-Bar; Panel: 24"x24" or 24"x48"
- Optional round 10" and 12" necks field installed
- Standard finish:
 - Mill (ML)

Square Perforated Pattern

SG100

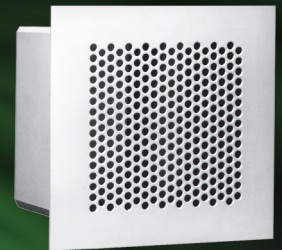
- Welded steel construction
- Maximum security applications
- Supply or return
- Wire mesh screen behind one piece face plate
- Sleeve lengths: 6", 8", 10", 12", 18"
- Sizes: 6x4 to 30x30
- Standard finish:
 - White (WH)
 - Mill (ML)
- Accessories:
 - Damper (SDFO, SDRO)
 - Anchor Bars (AB)
 - Angle Frame (AF)
 - Security Bars (SB)



Round Perforated Pattern

SG200, SG300, SG200-SD

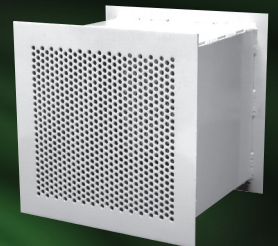
- Welded steel or aluminum construction
- SG200-SD suicide deterrent w/ face plate: 3/16" thick w/ 3/16" diameter holes on 9/32" staggered centers
- Maximum security applications
- Supply or return, perforated pattern on one piece face plate
- Sizes: 6x4 to 30x30, sleeve lengths: 6", 8", 10", 12", 18"
- Standard finish:
 - White (WH)
 - Mill (ML)
- Accessories:
 - Damper (SDFO, SDRO)
 - Anchor Bars (AB)
 - Angle Frame (AF)
 - Security Bars (SB)



Transfer Grille, Round Perforated Pattern

SG400

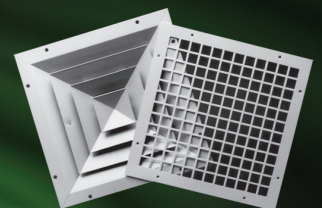
- Welded steel construction
- Maximum and maximum security applications
- Supply or return, perforated pattern on one piece face plate
- Dual face plates with perforated pattern
- Sizes: 6x4 to 30x30, sleeve lengths: 6", 8", 10", 12", 18"
- Standard finish:
 - White (WH)
 - Mill (ML)
- Accessories:
 - Anchor Bars (AB)
 - Security Bars (SB)



Louvered Diffuser with Lattice Face Plate

SG500

- Welded steel construction
- Minimum security applications
- 1, 2, 3 or 4-way air pattern
- Square or rectangular configuration
- Sizes: 6x6 to 24x24
- Standard finish:
 - White (WH)
 - Mill (ML)
- Accessories:
 - Damper (SDFO)
 - Rear Angle Frame (RF)





Bar Grille, 40° Deflection

SG600

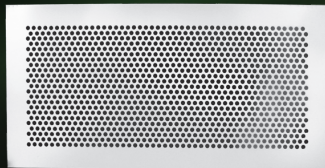
- Welded steel construction
- Medium security applications
- Bars spaced on 3/8" centers with 40° deflection
- Heavy gauge bars backed by wire mesh screen
- Sleeve lengths: 6", 8", 10", 12", 18"
- Sizes: 6x6 to 24x24
- Standard finish:
 - White (WH)
 - Mill (ML)
- Accessories:
 - Damper (SDFO, SDRO)
 - Anchor Bars (AB)
 - Angle Frame (AF)
 - Security Bars (SB)



Bar Grille, 0° Deflection

SG700

- Welded aluminum construction
- Minimum security applications
- Bars spaced on 1/2" centers with 0° deflection
- Ideal for high humidity areas
- Sleeve lengths: 6", 8", 10", 12", 18"
- Sizes: 6x4 to 30x30
- Standard finish:
 - White (WH)
 - Mill (ML)
- Accessories:
 - Damper (ADFO, ADRO)
 - Anchor Bars (AB)
 - Angle Frame (AF)
 - Security Bars (SB)



Lattice Face Plate

SG800, SG900

- One piece steel or aluminum construction
- Minimum security applications
- Designed to fit Tuttle & Bailey grilles and registers
- Heavy construction offers reliable duct barrier
- Available in square or round perforated pattern
- Sizes: 6x4 to 30x30
- Standard finish:
 - White (WH)
 - Mill (ML)
- Accessories:
 - Damper (SDFO, ADFO)
 - Plaster Frame (45, A45)
 - Screw Holes



Duct Bars

SDBS, SDBF

- Welded steel construction
- Available with security sleeve or outer frame
- Restricts passage through duct work
- Provides wall or roof barrier
- Sizes: 6x4 to 30x30
- Standard finish:
 - White (WH)
 - Mill (ML)

Underfloor Swirl Diffuser

SD1

- Designed for use in underfloor access systems
- High impact polymer construction
- Visual indicator shows damper position
- Dust collector facilitates cleaning
- Standard finish:
 - Black (BL)
 - Gray (GR)



Discus Series-Spot Diffusers

DJ

- Aluminum construction
- Versatile application uses for large or small spaces
- Gasketing provides smooth operation and prevents scratching
- Sliding plate damper available for balancing
- Sizes: 10x3 to 48x10 for 6" to 36" diameter duct
- Standard finish:
 - Painted Finish
 - Satin Anodized (SA)



Round Supply Grilles

RA50 (Single Deflection), RA54 (Double Deflection)

- Aluminum construction
- Extruded 1" deep blades allow for control of air projections
- Rolled margin blends in with walls and ceilings
- Duct mounting ring for easy installation
- Standard finish:
 - White (WH)
 - Mill (ML)
- Accessories:
 - Damper (RBN, RON, RRN)



Airfoil Round Supply Grilles

AV54R

- Aluminum construction
- Double Deflection
- Rolled margin to blend in with surrounding furnishings and architecture
- Duct mounting ring for easy installation
- Sizes available: 6" to 24"
- Standard finish:
 - White (WH)
 - Mill (ML)
- Accessories:
 - Damper (RBN, RON, RRN)





Industrial Round Supply Grilles

AIG-R

- Aluminum construction
- Double Deflection
- Gang operated blades allow for faster air adjustment
- Rolled margin blends in with virtually any surrounding
- Duct mounting ring for easy installation
- Standard finish:
 - Mill (ML)
- Accessories:
 - Damper (RBN, RON, RRN)



Roto-Jet® Drum Grilles

STRJ, MTRJ

- Aluminum construction
- Single vane (STRJ) or split vane design (MTRJ)
- Rotating barrel for 60° total adjustment
- Airflow patterns adjustable in horizontal and vertical planes
- Adjustable pattern on MTRJ units can reduce throw by 35%
- Blades spaced on 3" centers firmly hold deflection settings
- Sizes: 6x9 to 15x70
- Standard finish:
 - Mill (ML) - White
- Accessories:
 - Damper (DMPR)



Roto-Jet® Universal Drum Grilles

STRJ-U, MTRJ-U

- Aluminum construction
- Single vane (STRJ) or split vane design (MTRJ)
- Airflow patterns adjustable in horizontal and vertical planes
- Heavy gauge extruded material with quality moisture proof construction
- Adjustable pattern on MTRJ-U units to reduce throw by 35%
- Rotating barrel for 60° total adjustment
- Sizes: 6x9 to 15x72
- Standard finish:
 - Mill (ML)
- Accessories:
 - Damper Extractor -DPMX



JET-FLO® High Capacity Diffusers

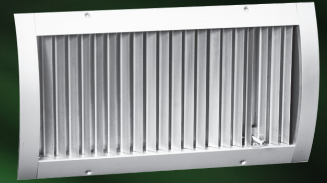
GJ JET-FLO®

- Heavy-duty aluminum construction
- Five inch deep element rings create positive air control
- 1 to 4 Elements
- Deflections up to 30° from any plane perpendicular to diffuser mounting surface
- Horizontal and vertical element pivots hold cores in position
- Ideal for areas of high humidity and moisture
- Standard finish:
 - White (WH)
 - Mill (ML)
- Accessories:
 - Damper (DOBD, A7DM)

Spiral Duct Grilles

A50SDG-R, A54SDG-R, A60SDG-R, A64SDG-R, APSDG-R Series

- Aluminum construction
- Curved frame designed to mount directly onto spiral duct
- Gasketing around perimeter
- Reduces installation costs and time
- Single (A50SDGR, A60SDGR) or double (A54SDG, A64SDG) deflection
- Vertical or horizontal front blades, optional perforated face
- Sizes: 10x3 to 48x12 for 6" to 36" diameter duct
- Standard finish:
 - White (WH)
 - Satin Anodized (SA)
- Accessories:
 - Adjustable Damper Extractor (DMPX)

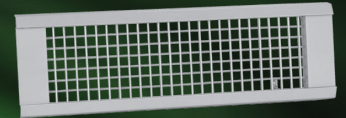


Spiral Duct Grilles

A50SDG-U, A54SDG-U, A60SDG-U, A64SDG-U, APSDG-U

Aluminum construction

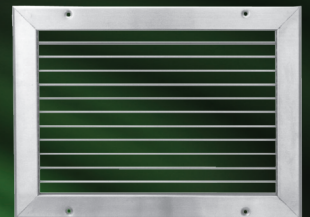
- Straight endcaps with gasketing available to mount directly to spiral duct regardless of duct diameter
- Single (A50SDG-U, A60SDG-U) or double (A54SDG-U, A64SDG-U) deflection
- Vertical or horizontal front blades, optional perforated face
- Sizes: 10x3 to 48x10 for 6" to 36" diameter duct
- Standard finish:
 - White (WH)
 - Satin Anodized (SA)
- Accessories:
 - Adjustable Damper Extractor (DMPX)



Stainless Steel Supply & Return Grilles

T50SS, T54SS, T60SS, T64SS, T70SS, T80SS

- Single deflection (T50SS, T60SS)
- Double deflection (T54SS, T64SS)
- Individually adjustable blades on 3/4" centers (T50SS, T60SS, T54SS, T64SS)
- Return grilles feature 0° or 45° bar deflection spaced on 3/4" centers
- 304 stainless steel construction (optional #316 stainless)
- Vertical or horizontal face bars
- Sizes: 4x4 to 48x60
- Standard finish:
 - Satin Polish (SP)
- Accessories:
 - Stainless Steel Damper (SSOBD)



Thermally Powered Diffuser

SC

- Steel construction
- VAV heating and VAV cooling four control types
- No electrical or pneumatic connections
- 4-way 360° discharge
- Removable face panel for ease of room temperature adjustments
- Unitary stamped seamless backpan with removable face plate
- Wax type thermal actuator
- Standard finish:
 - White (WH)
- Accessories:
 - Relief Ring (RR)

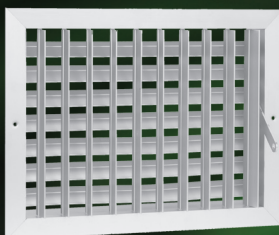




Electronically Controlled Diffusers

DCVH

- Steel construction
- Wall mounted thermostat control
- Automatic changeover from heating to cooling is standard
- 4-way 360° discharge
- Available for surface mount or Lay-in applications
- Unitary stamped seamless backpan with removable face plate
- Integral modulating disk to regulate volume
- Standard finish:
 - White (WH)



Industrial Supply Grilles

AIG Series

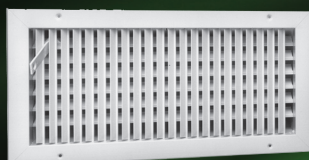
- Extruded aluminum construction
- Low-velocity, high-velocity & heavy duty high-velocity models
- Single or double deflection
- Ideal for areas of high humidity and moisture
- Sizes: 8x4 to 48x48
- Standard finish:
 - Mill (ML)
- Accessories:
 - Damper
 - Duct Collar
 - Screw Holes



Industrial Supply Grilles - Modular

MAIG Series

- Extruded aluminum construction
- Low-velocity, high-velocity & heavy duty high-velocity models
- 1, 2, 3 or 4 module configuration
- Single or double deflection
- Ideal for areas of high humidity and moisture
- Module sizes: 8x8 to 15x15
- Standard finish:
 - Mill (ML)
- Accessories:
 - Gang Operated Rear Blades



Commercial/Industrial Supply Grille

TIG

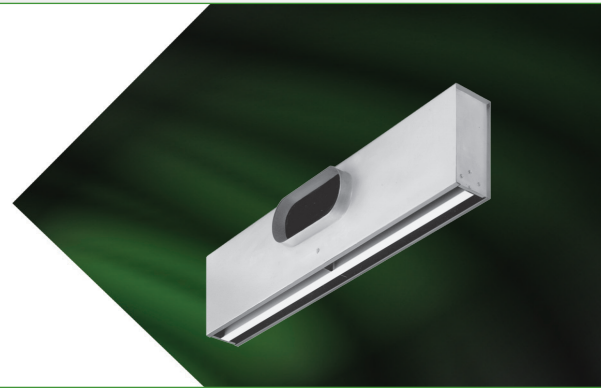
- Steel margin, aluminum blades
- Individually adjustable front blades
- Gang operated rear blades with adjustment handle
- Horizontal or vertical face blade direction
- Sizes: 10x6 to 40x36
- Standard finish:
 - White (WH)
- Accessories:
 - Damper

Single Vane, Adjustable

SVPS & SVPS-NR

- Steel construction
- Single vane pattern controller, 180° adjustable from face
- Standard nominal lengths: 24", 36", 48" & 60"
- 1 to 4 slot configuration in 3/4", 1" and 1-1/2" widths
- Internal insulation available
- Standard finish:
 - Black (BL) exposed surfaces
 - White tees
- Accessories:

<ul style="list-style-type: none"> - Factory Mounted T-Bars - Dampers - Plaster Frame 	<ul style="list-style-type: none"> - Cross Notch - Mounting Tabs - Earthquake Tabs
--	---

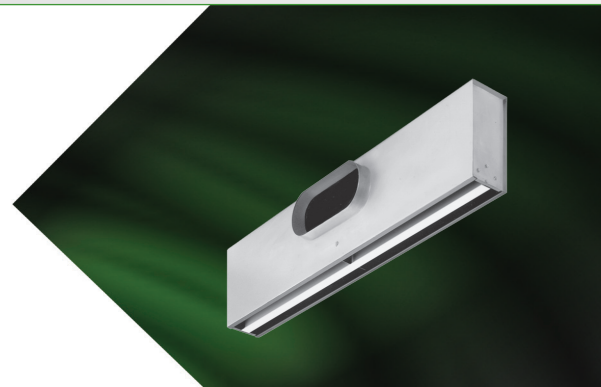


Modulinear Control, Adjustable

ITPS

- Steel construction
- Modulinear pattern controller provides maximum adjustability
- Standard nominal lengths: 24", 36", 48" & 60"
- 1 to 4 slot configuration in 3/4", 1" and 1-1/2" widths
- Internal insulation available
- Standard finish:
 - Black (BL) exposed surfaces
 - White tees
- Accessories:

<ul style="list-style-type: none"> - Factory Mounted T-Bars - Dampers - Plaster Frames 	<ul style="list-style-type: none"> - Cross Notch - Mounting Tabs - Earthquake Tabs
---	---

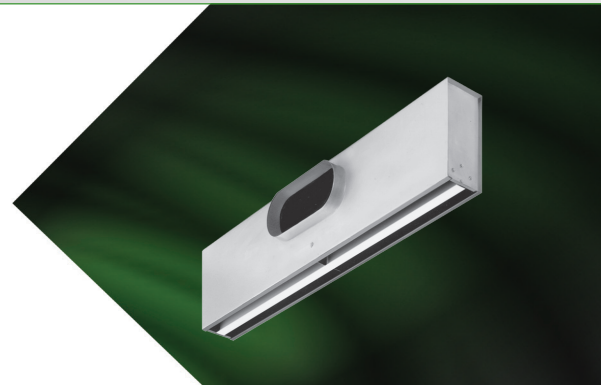


High Capacity, Adjustable

APPS, APPSF

- Steel construction
- Curved blade pattern controller (removable/reversible)
- Blades factory mounted or shipped loose for installation
- Standard nominal lengths: 24", 36", 48" & 60"
- 1 to 4 slot configuration in 3/4", 1" and 1-1/2" widths
- Internal insulation available
- Standard finish:
 - Black (BL) exposed surfaces
 - White tees
- Accessories:

<ul style="list-style-type: none"> - Factory Mounted T-Bars - Dampers - Plaster Frames 	<ul style="list-style-type: none"> - Cross Notch - Mounting Tabs - Earthquake Tabs
---	---

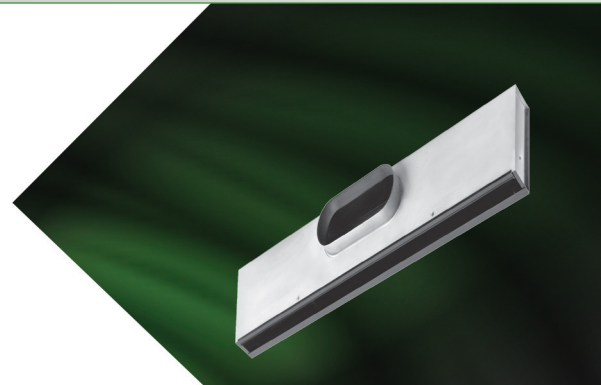


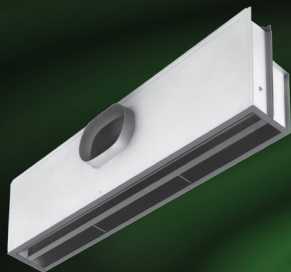
High Induction Series

HISD

- Steel construction
- Non-adjustable curved blade pattern controller
- Wide horizontal air pattern provides high rate of induction
- Standard nominal lengths: 24", 36", 48" & 60"
- Single slot configuration with 3/4" width
- Standard finish:
 - Black (BL)
- Accessories:

<ul style="list-style-type: none"> - Factory Mounted T-Bars - Dampers 	<ul style="list-style-type: none"> - Plaster Frames
---	--

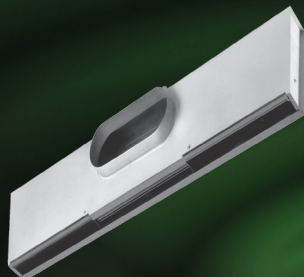




High Induction Series

HISR

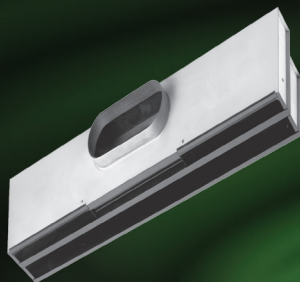
- Steel construction
- Non-adjustable curved blade pattern controller
- Wide horizontal air pattern provides high rate of induction
- Standard nominal lengths: 24", 36", 48" & 60"
- Single slot configuration with 3/4" width
- Standard finish:
 - Black (BL)
- Accessories:
 - Factory Mounted T-Bars
 - Plaster Frames
 - Dampers



High Induction Series

HIDD

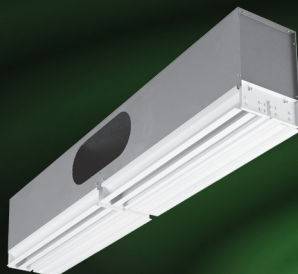
- Steel construction
- Curved blade pattern controller with vertical down blow center section provides horizontal and vertical air patterns
- Excellent for VAV applications
- Standard nominal lengths: 24", 36", 48" & 60"
- Single slot configuration with 3/4" width
- Standard finish:
 - Black (BL)
- Accessories:
 - Factory Mounted T-Bars
 - Plaster Frames
 - Dampers



High Induction Series

HIDR

- Steel construction
- Curved blade pattern controller with vertical down blow center section provides horizontal and vertical air patterns
- Excellent for VAV applications
- Integral return section attached to supply diffuser
- Standard nominal lengths: 24", 36", 48" & 60"
- Single slot configuration with 3/4" width
- Standard finish:
 - Black (BL)
- Accessories:
 - Factory Mounted T-Bars
 - Plaster Frames
 - Dampers



Fixed Vane Supply

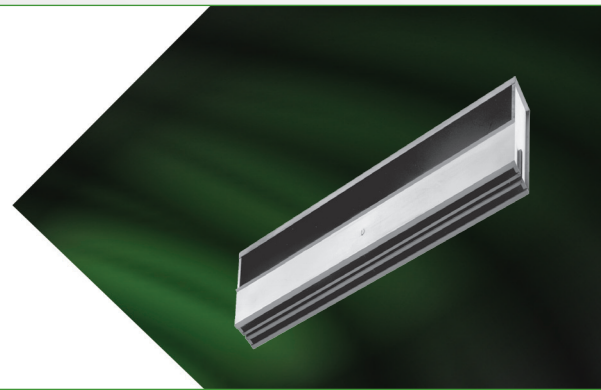
FVPS

- Steel backpan with aluminum face
- Fixed blade pattern controller for optimal performance
- Removable plenum allows inlet direction to be reversed
- Standard nominal lengths: 24", 36", 48" & 60"
- 1 to 4 slot configuration with 1 or 2 way air pattern
- Standard finish:
 - White (WH)
- Accessories:
 - Plaster Frame
 - Internal Insulation
 - Cross Notch

Returns

PSDR, PSDR-NR

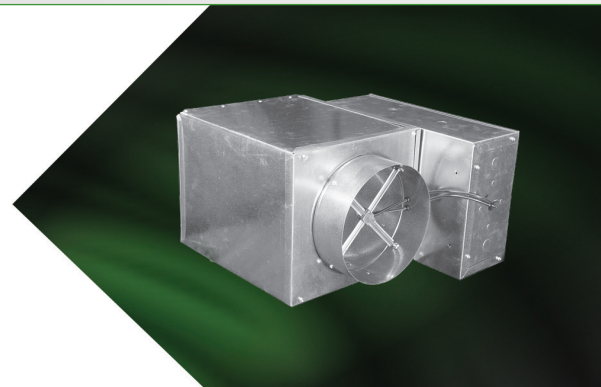
- Steel construction
- Matching return for SVPS and ITPS
- Internal light shield
- Internal insulation available
- Standard nominal lengths: 24", 36", 48" & 60"
- 1 to 4 slot configuration in 3/4", 1" and 1-1/2" widths
- Standard finish:
 - Black (BL) exposed surfaces
 - White tees
- Accessories:
 - Factory Mounted T-Bars
 - Cross Notch
 - Dampers
 - Mounting Tabs
 - Plaster Frames
 - Earthquake Tabs



Single Duct Air Terminal

SDV

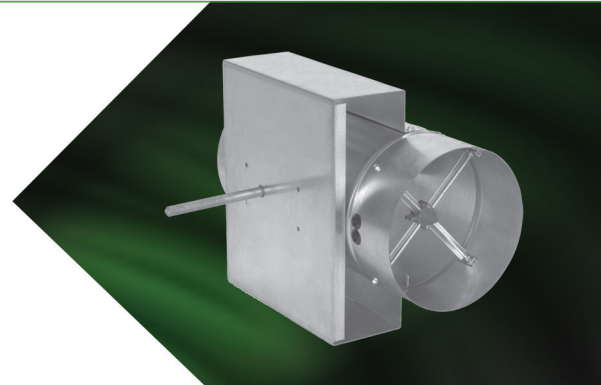
- 22 gauge construction
- Optional 20 gauge galvanized
- Patented Flo-Cross® air flow sensor
- Industry standard insulations available
- Pneumatic or analog controls are optional from the factory
- Available factory mounting of customer supplied controls
- 10 inlet sizes available
- Accessories: Hot water or electric heat, attenuator
- AHRI certified performance



Single Duct Round Air Terminal

SDR

- 22 gauge construction
- Patented Flo-Cross® air flow sensor
- Pneumatic or analog controls are optional from the factory
- Available factory mounting of customer supplied controls
- 9 inlet sizes available



Lab Series

RRV

- 20 gauge galvanized construction (stainless steel optional)
- Orifice flow sensor
- Pneumatic or analog controls are optional from the factory
- Solid stainless steel shaft
- Available factory mounting of customer supplied controls

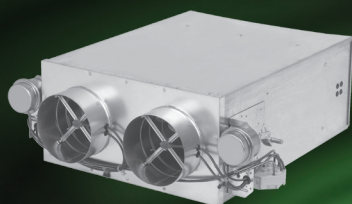




Dual Single Duct Air Terminal

DSV

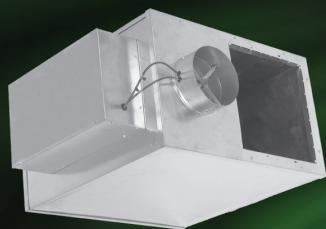
- 22 gauge construction, 20 gauge optional
- Patented Flo-Cross® air flow sensor
- Industry standard insulations available
- Pneumatic or analog controls are optional from the factory
- Available factory mounting of customer supplied controls
- Wide range of inlet sizes



Dual Duct Air Terminal

DDV

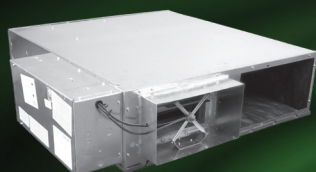
- 22 gauge construction, 20 gauge optional
- Patented Flo-Cross® air flow sensor
- Industry standard insulations available
- Pneumatic or analog controls are optional from the factory
- Available factory mounting of customer supplied controls
- Inlet or discharge sensing
- Integral mixing baffle available
- Wide range of inlet sizes
- AHRI certified performance



Fan Powered Constant Air Terminal

FPC

- Used for constant volume (series) applications
- 20 gauge construction
- Patented Flo-Cross® air flow sensor
- Industry standard insulations available
- ECM option available
- Pneumatic or analog controls are optional from the factory
- Available factory mounting of customer supplied controls
- Accessories: Hot water or electric heat, attenuator
- AHRI certified performance



Low Profile Fan Powered Constant Air Terminal

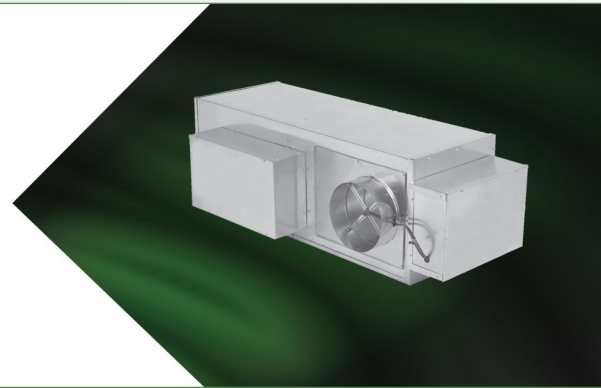
LPC

- Used for constant volume (series) applications
- 20 gauge construction
- Patented Flo-Cross® air flow sensor
- Industry standard insulations available
- Pneumatic or analog controls are optional from the factory
- Available factory mounting of customer supplied controls
- Accessories: Hot water or electric heat, attenuator
- AHRI certified performance

Fan Powered Variable Air Terminal

FPV

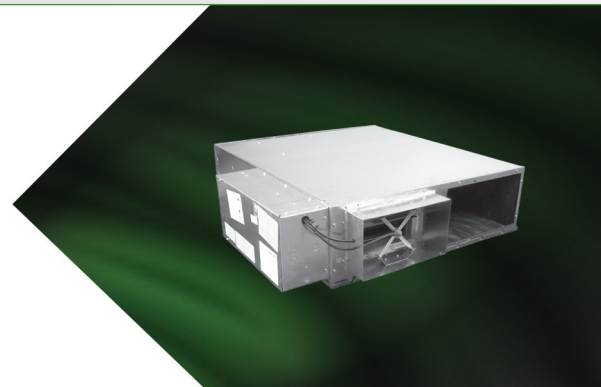
- Used for variable volume (parallel) applications
- 20 gauge construction
- Patented Flo-Cross® air flow sensor
- Industry standard insulations available
- Pneumatic or analog controls are optional from the factory
- Available factory mounting of customer supplied controls
- Accessories: Hot water or electric heat, attenuator
- AHRI certified performance



Low Profile Fan Powered Variable Air Terminal

LPV

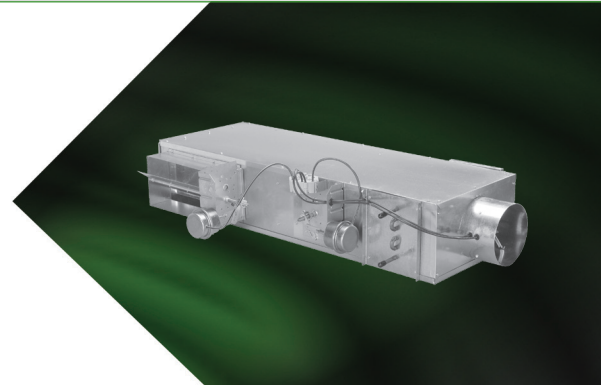
- Used for variable volume (parallel) applications
- 20 gauge construction
- Patented Flo-Cross® air flow sensor
- Industry standard insulations available
- Pneumatic or analog controls are optional from the factory
- Available factory mounting of customer supplied controls
- Accessories: Hot water or electric heat, attenuator
- AHRI certified performance



Induction Air Terminal

IDV

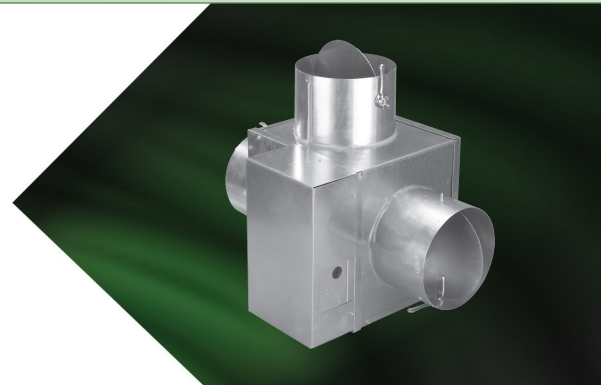
- Economical and environmentally friendly alternative to fan box applications
- 22 gauge construction
- Patented Flo-Cross® air flow sensor
- Pneumatic or analog controls are optional from the factory
- Available factory mounting of customer supplied controls
- 8 inlet sizes available
- Accessories: Hot water heat
- AHRI certified performance



Bypass Air Terminal

BPS

- Used for pressure dependent control situations
- 22 gauge construction
- 1/2" dual density fiberglass liner
- Pneumatic or analog controls are optional from the factory
- Available factory mounting of customer supplied controls
- Accessories: Locking balancing damper on inlet, discharge and/or bypass



MODELS

200 : 8

1200 : 2

1300 : 2

4000 : 7

6000 : 8

A

A20, A40 : 9

A50, A60 : 9

A50SDG-R, A60SDG-R, APSDG-R : 17

A50SDG-U, A60SDG-U, APSDG-U : 17

A70, A80 : 9

A70DFB, A80DFB : 11

A110 : 10

A980, A990 : 10

A1100 : 2

AIG-R : 16

AIG Series : 18

AIR-TRAC® : 7

AMR500 : 3

AP3 : 4

APG : 11

APGFB : 11

APM : 5

APP : 6

APPS, APPSF : 19

APR : 6

APTL : 7

APV : 5

AQD : 3

AV50, AV54, AV60, AV64 : 8

AV54R : 15

AVJ : 4

B

BPS : 23

C

CRE500FB : 11

CRE, CR, SCRE : 10

D

DCVH : 18

DDV : 22

DJ : 15

DQM, DQR : 8

DSV : 22

E

EF : 7

EH : 7

F

FPC : 22

FPV : 23

FVPS : 20

G

GJ : 16

GOA, GAA, GMA, GOR,
GAR, GMR, GOV, GAV : 9

H

HIDD : 20

HIDR : 21

HISD : 19

HISR : 20

I

IDV : 23

ITPS : 19

L

LTD : 13

LPC : 22

LPV : 23

M

M : 3

MAIG Series : 18

M-FR, MA-FR : 3

MTRJ : 16

MTRJ-U : 16

P

P3 : 4

PCB : 5

PCR : 6

PG : 11

PGFB : 11

PM : 5

PP : 6

PR : 6

PSDR, PSDR-NR : 21

PTL : 6

PV : 5

R

RA50, RA54 : 16

RADIAN : 12

RC : 2

RRV : 21

RT1100 : 4

S

SC : 17

SD1 : 15

SDBS, SDBF : 14

SDR : 21

SDV : 21

SG100 : 13

SG200, SG300, SG200-SD : 13

SG400 : 13

SG500 : 13

SG600 : 14

SG700 : 14

SG800, SG900 : 14

SQD : 3

STRJ : 16

STRJ-U : 16

SVPS, SVPS-NR : 19

T

T50SS, T60SS, T70SS, T80SS : 17

T50, T60 : 9

T70FB, T80FB, T115FB : 11

T70, T80 : 9

T115 : 10

T125, T155 : 10

T1100 : 2

T1100SW : 4

TENSOR : 11

TIG : 18

V

VB : 5

VECTOR : 12

VF : 11

VJ : 4

V-SLOT : 12

All the Power of Our Website Just Portable

Features include:

- E-Catalog
- Ad Cross
- Rep locator



mobile.tuttleandbailey.com

Tuttle & Bailey has harnessed all the power of its website (www.tuttleandbailey.com) and optimized it for the smartphones. The website can be accessed via all major platforms by logging on to mobile.tuttleandbailey.com, using your smartphones web browser. You can also access the mobile site by scanning the below QR code with your phone.



Scan QR code with your smartphone



1401 N. Plano Rd
Richardson, TX 75081

972.680.9128
972.497.0481
www.tuttleandbailey.com

©2011 Tuttle & Bailey®
All Rights Reserved

Manufacturing Locations:

*Geneva, AL	*El Paso, TX
Ponca City, OK	*Tarboro, NC
Tucson, AZ	Sanford, NC

*ISO-90012000 Certified

Product specifications are subject to change without notice.
For current specifications contact your local Tuttle & Bailey
representative or visit our website at www.tuttleandbailey.com





AIR-TRAC™
NO LIMITS...

Aluminum Extrusions

Up to 3" Slot Widths

Custom Curving

Designed to deliver maximum performance without sacrificing an architect's aesthetic vision. The AIR-TRAC™ (architectural linear diffuser system) from Tuttle & Bailey® is the ultimate compliment for high end construction projects.

The aluminum constructed AIR-TRAC™ delivers higher airflows and lower noise than standard linear diffusers. AIR-TRAC™ also offers up to 3" slot widths with multiple slots.

Unlike traditional linear diffusers, which are often installed after the ceiling is completed, AIR-TRAC™ is installed along with the ceiling suspension system allowing AIR-TRAC™ to bend and shape with the curves of the room.



 **TUTTLE & BAILEY®**
The First Name In Air Distribution

For more information on all Tuttle & Bailey® Products contact your local Tuttle & Bailey® Representative or visit us online at www.tuttleandbailey.com

